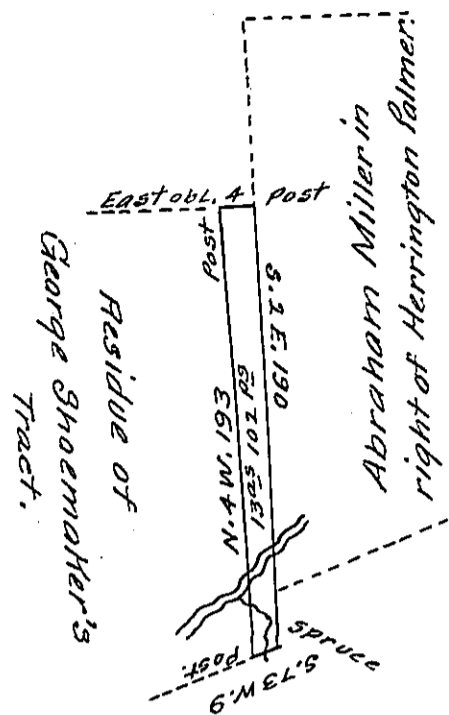


John Nusser & Co.



The Draught of a tract of land situate in Haines Township Centre County containing thirteen acres, one hundred and two perches and allowance of six per Cent. being part of a tract of Land surveyed to George Shoemaker the 18th day of August 1773 in pursuance of an order of Survey dated the first day of August 1766 and Numbered 296, then in Potter Township Northumberland County and subdivided as above represented the 16th day of May A. D. 1811.

W^m Herr D. S.

To Andrew Porter, Esquire,
Surveyor General of Pennsylvania.

IN TESTIMONY that the above is a copy of the original remaining on file in the Department of Internal Affairs of Pennsylvania, made conformably to an Act of Assembly approved the 16th day of February, 1833, I have hereunto set my Hand and caused the Seal of said Department to be affixed at Harrisburg, this twenty seventh day of February 1906

Loach B. Brown
Secretary of Internal Affairs.